

Streets Blended Aerial

Noble Park 2 54 homes

Apple Green 32 homes

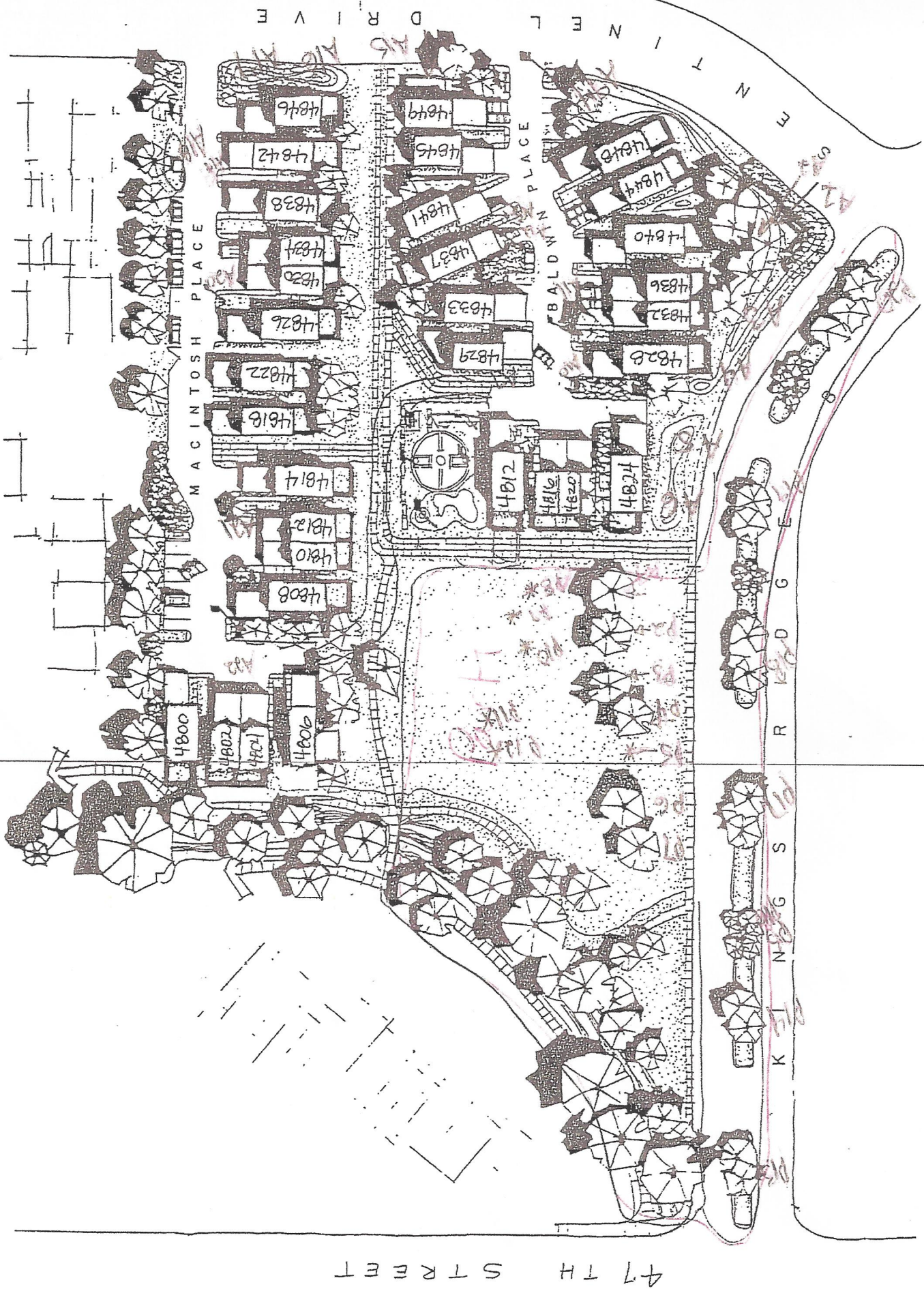
Noble Park Commons 49 homes

CENTER GREEN HEIGHTS PARK ASSOCIATION

- Center Greens:
 - Park Area + 4 medians on Kings Ridge Blvd.



APPLE GREEN H.O.A.



47 TH STREET

D R I V E

N E L

T

M

N

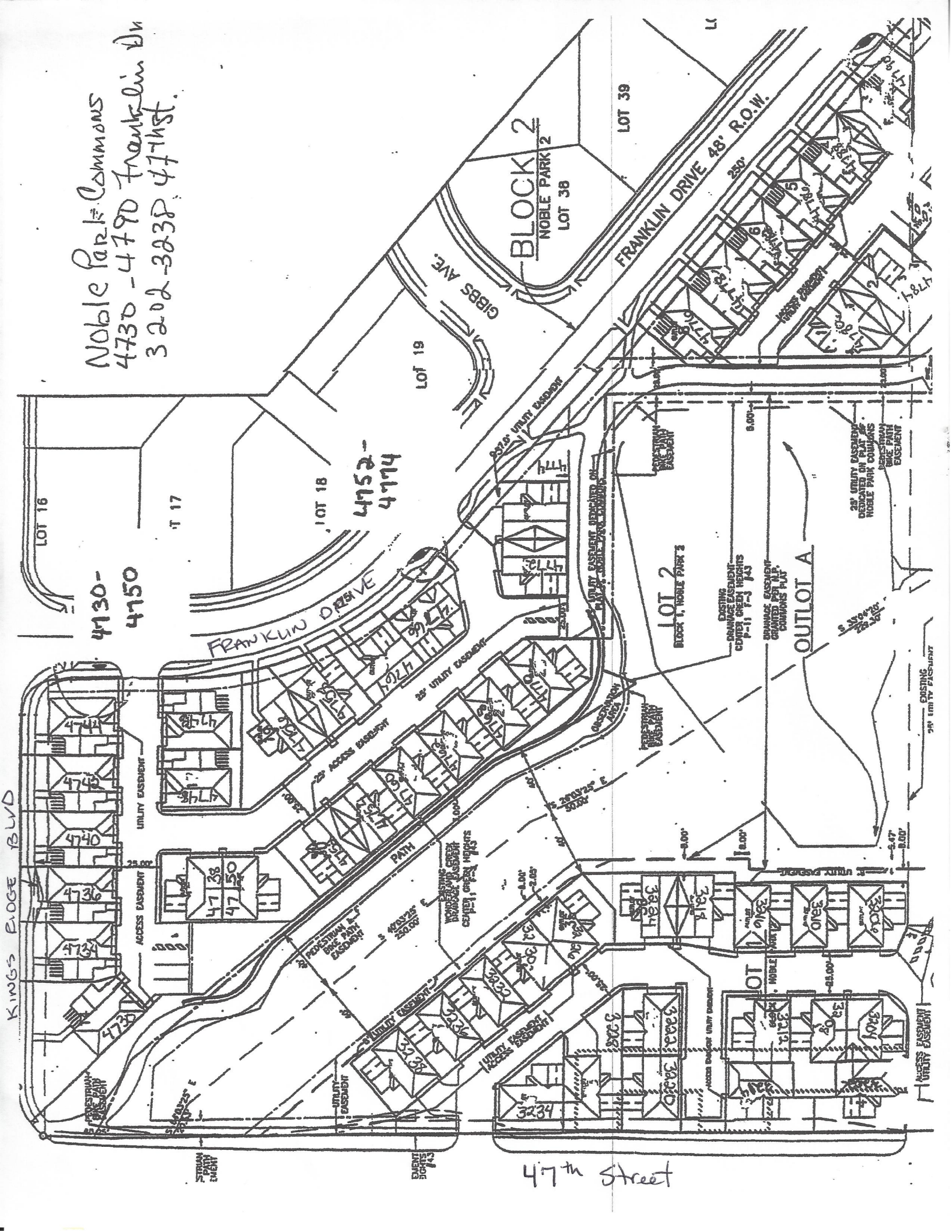
S

M A C I N T O S H P L A C E

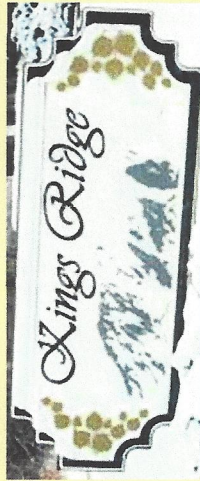
B A L D W I N P L A C E

K E N N E T H R I D G E

Noble Park Commons
4730 - 4790 Franklin Dr
3202-3238, 47th St.



47th Street



Noble Park 2 Homeowners Association



Home Page

Public Information

- NP2 HOA Addresses

- **Center Green**

Homeowner Information



Center Green & NP2 HOA's Financial Responsibility

- **NP2 HOA's Financial Responsibility**

The vast majority, approximately 92%, of NP2 HOA's financial responsibility is to Center Green. The other NP2 HOA expenses are for insurance, web site, postage and office supplies.

- **Center Green**

Center Green is the legal entity created by the City of Boulder and some of the original developers of the Kings Ridge area. The official name is "Center Green Heights Park HOA", but for simplicity we call it Center Green.

Center Green is responsible for maintenance of the Kings Ridge median from 47th street down to, but not including, the circle intersection with Franklin. (That circle is maintained by the Noble Park HOA.) And Center Green is responsible for the park North of Kings Ridge (shown in the map below).



Center Green has three members - the Apple Green HOA, the Noble Park Commons HOA, and the Noble Park 2 HOA. Each HOA has a single vote in deciding on the Center Green budget and maintenance priorities.

The Center Green expenses are split between the three HOAs in proportion to the number of home in the HOA. With 54 homes out of a combined total of 135, Noble Park 2 is responsible for 40% of the Center Green expenses.

The major expenses that Center Green has are: irrigation system repairs, landscaping service, water, and tree work & pruning. Some of the key challenges in maintaining the median and park are: protecting the pine trees from the pine beetle attacks; protecting the ash trees from the emerald ash borer; repairing the 20 year old sprinkler system; and maintaining previously-neglected older trees in the medians, park and along the city bike path.

© 2013 Noble Park 2 Homeowners Association